

RESTAURO DI EDIFICIO POLIFUNZIONALE
NELLA FRAZIONE DI ONARA - VIA CHIESA

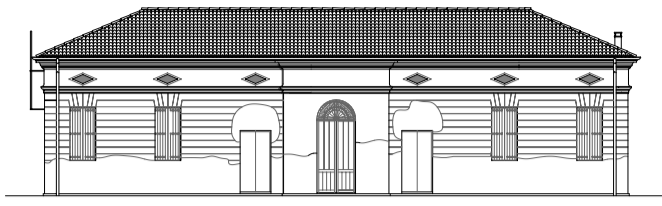


Tavola n.
S01
PIANTE SERVIZI
PIANTA COPERTURA

Scala 1:50		
File: C47_A1_T040		
REVISIONI		
Data	Oggetto	Dis.
11-2013	Stesura	M.C.
...
...
...
...

COMMITTENTE: AMMINISTRAZIONE COMUNALE DI TOMBOLO

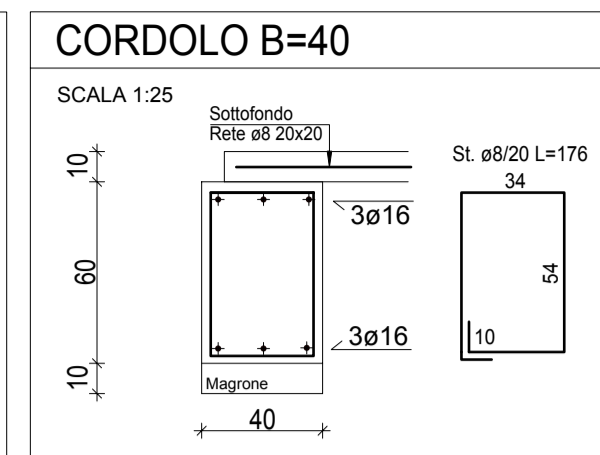
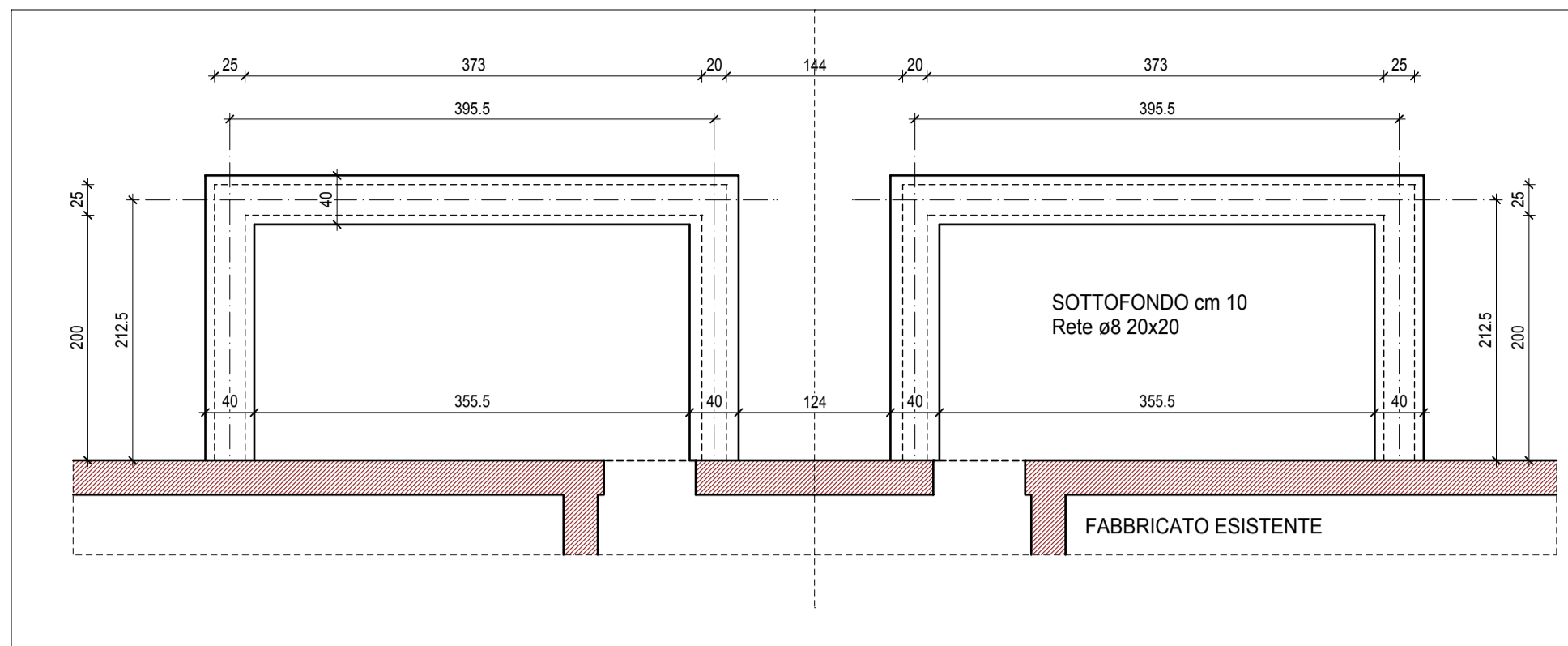
TECNICO: Ing. Matteo CENTENARO

A.T.P.

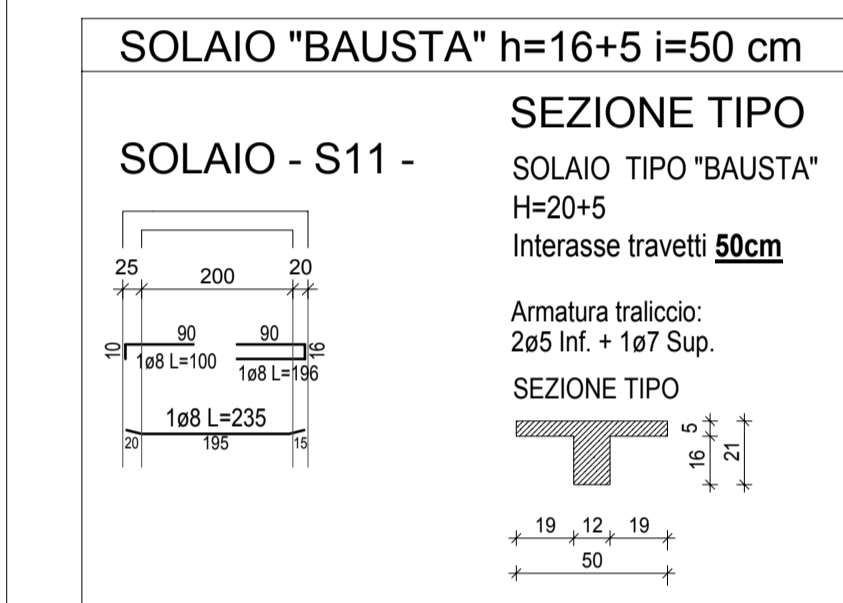
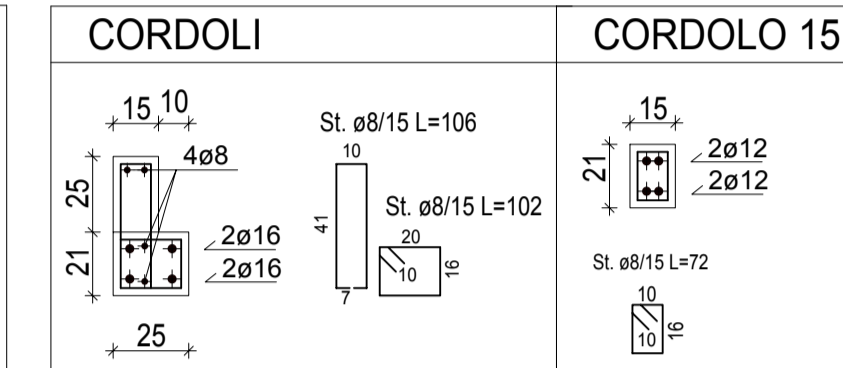
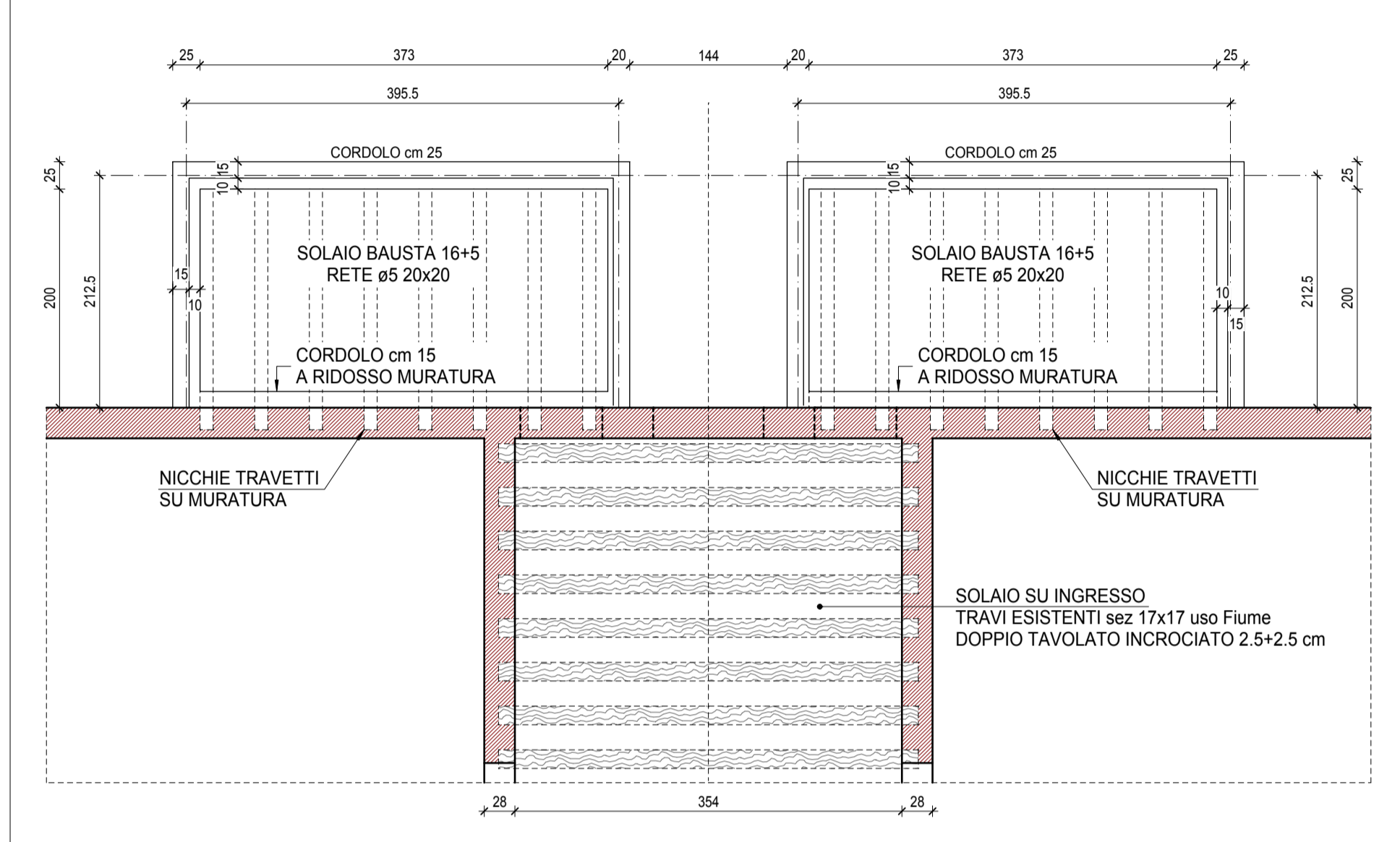
Ing. VALERIO CARNIO & Arch. SAURO GASPARIN - Geom. DINO PEGORIN
35017 PIOMBINO DESE (PD) via Roma, 67/c

Tel. (049) 9365117 - E-MAIL: info@carnio-gasparin.it - Fax (049) 9366940 - C.F. e P.I.V.A. 02451590281

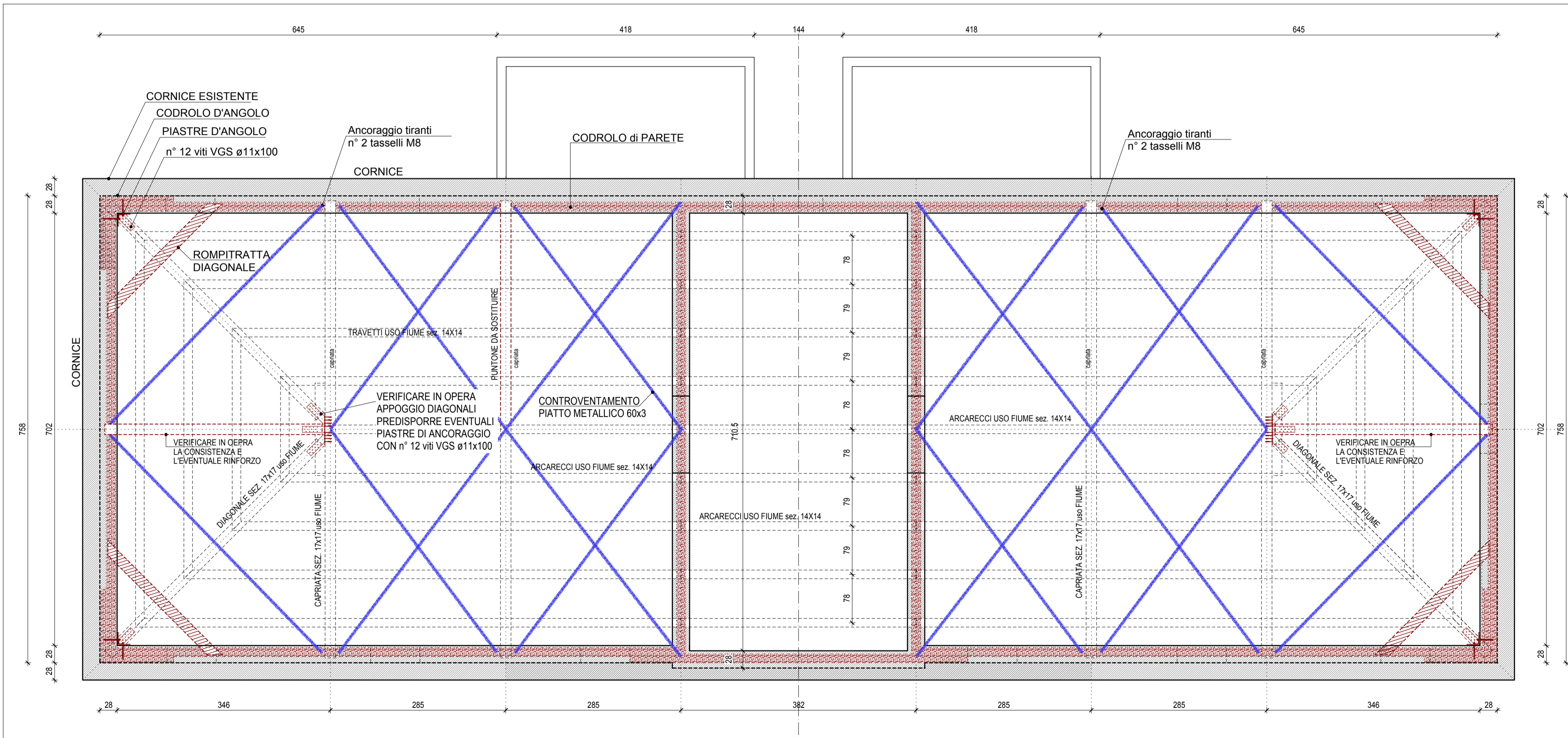
PIANTA FONDAZIONE SERVIZI scala 1:50



PIANTA SOLAI scala 1:50



PIANTA COPERTURA scala 1:50



PARTICOLARE APPOGGIO DIAGONALI SCALA 1:25

